

STANDARD EIA FLOOR & WALL MOUNT RACKING SYSTEMS

4-Post Racks & Accessories

NOTE: Product dimensions are listed by width, height and depth unless specified otherwise.

OR-ESV-19-FST2126



Adjustable Pull-Out Equipment Shelves

Features:

- Shelves glide forward and backward for equipment access
- Auto-lock function responds when fully extended
- Brackets secure the shelf to the rack when returned to its standard operating position
- All shelves are vented
- Adjust in 1/2-inch increments
- M6DRSAK required when mounting on M6 rack
- Black finish

PART NO.	DESCRIPTION
OR-ESV-19-FST1520	4.13"H x 17.50"W x 20.17"D, load rating extended: 275 lbs
OR-ESV-19-FST2126	4.13"H x 17.50"W x 26.17"D, load rating extended: 275 lbs
OR-ESV-19-FST2732	4.13"H x 17.50"W x 32.17"D, load rating extended: 275 lbs

Load rating determined by .50" deflection at end of extended shelf.

OR-M6DRSAK



M6 Adapter Bracket

The M6 adapter bracket allows the adjustable pull-out equipment shelves to mount easily to M6 adjustable dual equipment racks. The adapter bracket attaches to the pull-out shelf mounting bracket to allow 12-24 mounting within M6 square holes.

Features:

- Converts adjustable pull-out equipment shelf mounting on M6 adjustable dual racks
- Durable black finish
- Four adapter brackets
- Mounting hardware included
- 12-gauge steel construction
- Meets EIA-310 standards

PART NO.	DESCRIPTION
OR-M6DRSAK	3.50"H x 1.00" W x 3.19"D*

*Depth includes full depth (including bracket M6 latch hook).

STANDARD EIA FLOOR & WALL MOUNT RACKING SYSTEMS

4-Post Racks & Accessories

NOTE: Product dimensions are listed by width, height and depth unless specified otherwise.

OR-DC1520-19



Adjustable Dual Rack Dust Cover

Features:

- Fully shields the self-support base opening to keep dust from accumulating
- Mounts on all adjustable dual racks
- Provides a clean installation
- Three-piece cover easily assembles without the use of tools
- Constructed of 16-gauge steel
- Black finish

Vented Equipment Shelf

PART NO.	DESCRIPTION
OR-DC1520-19	19.38 "W x 15.00–20.00"D, 10 lbs
OR-DC2126-19	19.38"W x 21.00–26.00"D, 12 lbs
OR-DC2732-19	19.38"W x 27.00–32.00"D, 15 lbs

OR-RRJC-S



Adjustable Dual Rack Runway Kit

Features:

- Mounts runway to adjustable dual equipment rack
- Brackets create a strong bond between the rack and the runway for solid overhead cable support
- Includes two top angle brackets and two side brackets for parallel or perpendicular mounting

PART NO.	DESCRIPTION
OR-RRJC-S	Adjustable dual rack runway bracket kit, 1 lb

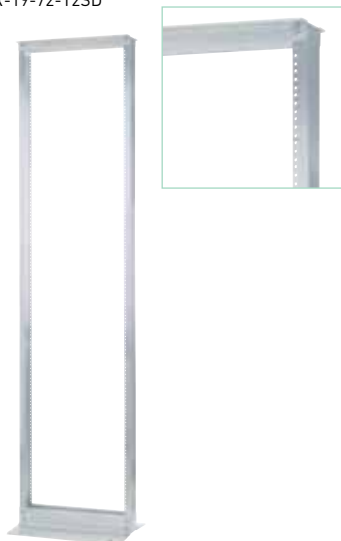
Clear zinc plated.

STANDARD EIA FLOOR & WALL MOUNT RACKING SYSTEMS

2-Post Racks & Accessories

NOTE: Product dimensions are listed by width, height and depth unless specified otherwise.

OR-19-72-T2SD



Standard Equipment Racks

The Homaco® computer-guided manufacturing process assures that each rack meets exact dimensions, guaranteeing a self-squaring assembly. Made of top quality 6061-T6 structural grade aluminum, Ortronics equipment racks provide strength and stability for years. Racks ship unassembled for efficient delivery and storage.

Features:

- Self-squaring and self-supporting
- Tapped uprights so no nuts are required for assembly
- Top angles, patented self-support base are standard
- Assembly hardware included
- Mounting holes are roll formed for work hardened thread system
- Includes 12-24 cross-recessed black panel mounting screws
- Constructed of 6061-T6 structural-grade aluminum
- 3" x 1 1/4" channel uprights

Specifications:

- 5/8", 5/8", 1/2" universal mounting hole pattern
- Equipped with 1/2" junctioning holes for securing multiple-rack lineups
- Meets EIA-310 standards
- Listed to the UL 1863 Standard for Communication Circuit Accessories

19" Rack – 3" Channel

PART NO.	DESCRIPTION
OR-19-72-T2SD	72.00"H x 20.19"W x 15.00"D, rack spaces: 38, channel width: 3, load rating: 750 lbs
OR-19-84-T2SD	84.00"H x 20.19"W x 15.00"D, rack spaces: 45, channel width: 3, load rating: 750 lbs
OR-19-96-T2SD	96.00"H x 20.19"W x 15.00"D, rack spaces: 51, channel width: 3, load rating: 750 lbs

Aluminum finish. Add "B" to part number for black finish.

19" Rack – 6" Channel

PART NO.	DESCRIPTION
OR-19-84-6T2SDB	84.00"H x 20.19"W x 18.00"D, rack spaces: 45, channel width: 6, load rating: 750 lbs

Black finish.

23" Rack – 3" Channel

PART NO.	DESCRIPTION
OR-23-72-T2SD	72.00"H x 24.19"W x 15.00"D, rack spaces: 38, channel width: 3, load rating: 750 lbs
OR-23-84-T2SD	84.00"H x 24.19"W x 15.00"D, rack spaces: 45, channel width: 3, load rating: 750 lbs
OR-23-96-T2SD	96.00"H x 24.19"W x 15.00"D, rack spaces: 51, channel width: 3, load rating: 750 lbs

Aluminum finish. Add "B" to part number for black finish.

23" Rack – 6" Channel

PART NO.	DESCRIPTION
OR-23-84-6T2SDB	84.00"H x 24.19"W x 18.00"D, rack spaces: 45, channel width: 6, load rating: 750 lbs

Black finish.

OR-IPK



Equipment Rack Isolation Pad Kit

Isolates equipment racks from concrete floors for effective bonding and grounding

PART NO.	DESCRIPTION
OR-IPK	Isolation pad kit for standard equipment racks

STANDARD EIA FLOOR & WALL MOUNT RACKING SYSTEMS

2-Post Racks & Accessories

NOTE: Product dimensions are listed by width, height and depth unless specified otherwise.

OR-SVMS706



Standard Vertical Cable Management Cage with Cover

Mounts to the side of a standard EIA rack. The fingers are spaced to line up with rack units, promoting efficient routing of patch cords to patch panels and equipment from the vertical manager. Dual snap on hinged covers allow easy access during moves, add, and changes. Available in single-sided and double-sided versions.

NOTE: Includes all hardware necessary to mount to the side of a standard EIA rack.

Single-sided

PART NO.	DESCRIPTION
OR-SVMS704	3.75" x 6.58" x 7', single-sided
OR-SVMS706	6.00" x 6.58" x 7', single-sided
OR-SVMS804	3.75" x 6.58" x 8', single-sided
OR-SVMS806	6.00" x 6.58" x 8', single-sided

Double-sided

PART NO.	DESCRIPTION
OR-DVMS704	3.75" x 13.17" x 7', double-sided
OR-DVMS706	6.00" x 13.17" x 7', double-sided
OR-DVMS804	3.75" x 13.17" x 8', double-sided
OR-DVMS806	6.00" x 13.17" x 8', double-sided

OR-VO-84-T6FTE



Vertical Organizers

Patented vertical organizers save time and money during moves, adds, and changes to patch panels. Rings in the front organize patch cords with ease. A rear, U-shaped channel is formed either between equipment racks or at the end of a lineup to provide a pathway for delivering horizontal cables to patch panels. The 6" width is used between fully loaded racks; the 3" width is used with a single rack, at the end of a lineup or between partially loaded racks. Black

Features:

- Rings are spaced 9" apart, center ring is spaced 13" apart from others
- Three-inch organizers (2.63"W x 4.13"D) accommodate 130 Cat 5e patch cords at 40% fill
- Six-inch organizers (5.63"W x 4.13"D) accommodate 276 Cat 5e patch cords at 40% fill
- Shipped in two sections for easy on-site assembly
- Sturdy steel construction
- Mounting hardware included: 6 of each: 3/8 hex nuts, 3/8 bolts, 3/8 lock washers, 3/8 flat washers
- Fits all EIA-310 compliant equipment racks

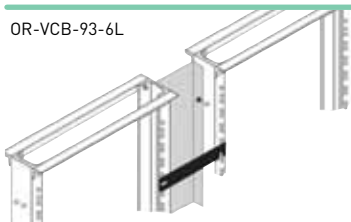
PART NO.	DESCRIPTION
OR-VO-84-T3E	Solid, channel width: 3", 80.00"H x 3.00"W x 5.31"D
OR-VO-84-T6E	Solid, channel width: 6", 80.00"H x 6.00"W x 5.31"D
OR-VO-84-T3FTE	Feed-through holes, channel width: 3", 80.00"H x 3.00"W x 5.31"D
OR-VO-84-T6FTE	Feed-through holes, channel width: 6", 80.00"H x 6.00"W x 5.31"D
OR-VO-96-T3E	Solid, channel width: 3", 92.00"H x 3.00"W x 5.31"D
OR-VO-96-T6E	Solid, channel width: 6", 92.00"H x 6.00"W x 5.31"D
OR-VO-96-T3FTE	Feed-through holes, channel width: 3", 92.00"H x 3.00"W x 5.31"D
OR-VO-96-T6FTE	Feed-through holes, channel width: 6", 92.00"H x 6.00"W x 5.31"D

STANDARD EIA FLOOR & WALL MOUNT RACKING SYSTEMS

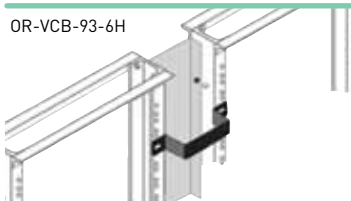
2-Post Racks & Accessories

NOTE: Product dimensions are listed by width, height and depth unless specified otherwise.

OR-VCB-93-6L



OR-VCB-93-6H



Vertical Control Brackets

Vertical control brackets attach to equipment racks to provide secure backside cable containment; Legrand | Ortronics recommends using four brackets on an 84" rack.

Features:

- Use with 6" vertical organizers for double-sided management
- Sold individually
- Includes 12-24 mounting hardware
- Constructed of steel

Use with 6" wide Vertical Organizers

PART NO.	DESCRIPTION
OR-VCB-93-6L	Cable capacity: 216, 1.00"H x 8.56"W x 0.06"D
OR-VCB-93-6U	Cable capacity: 216, 1.00"H x 7.28"W x 2.73"D
OR-VCB-93-6H	Cable capacity: 432, 1.00"H x 8.56"W x 6.00"D
OR-VCB-93-6UH	Cable capacity: 432, 1.00"H x 7.28"W x 3.69"D

Black finish. Cable capacities are based on Cat5e cable and a 40% fill.

OR-CR-93S-1B



OR-CR-93S-2B



OR-CR-93S-3B



OR-CR-93S-4B



Cable Rings

Features:

- Mount to any equipment rack, including Swing-EZs, for versatile vertical jumper management
- Channel cables from the floor or ceiling to patch panels
- CR-93S-1B and CR-93S-3B rings fit within the width of a rack; they are designed for smaller, single-rack installations or where the width of the rack cannot be exceeded
- Larger capacity CR-93S-2B and CR-93S-4B rings mount between adjacent racks and equal the combined width of the rack channels; they are designed for multiple rack installations
- Slotted mounting holes for easy installation; able to mount beneath pre-installed equipment
- Includes 12-24 mounting hardware
- Constructed of 12-gauge steel
- Sold individually

PART NO.	DESCRIPTION
OR-CR-93S-1B	Inside ring dimensions: 0.91"W x 2.50"D, rack spaces: 2, cable capacity: 27
OR-CR-93S-2B	Inside ring dimensions: 2.19"W x 2.50"D, rack spaces: 2, cable capacity: 65
OR-CR-93S-3B	Inside ring dimensions: 0.91"W x 4.75"D, rack spaces: 2, cable capacity: 51
OR-CR-93S-4B	Inside ring dimensions: 2.19"W x 4.75"D, rack spaces: 2, cable capacity: 124

Black finish. Cable capacity based on Cat 5e cable

STANDARD EIA FLOOR & WALL MOUNT RACKING SYSTEMS

2-Post Racks & Accessories

NOTE: Product dimensions are listed by width, height and depth unless specified otherwise.

OR-CB-93-6



Cable Brackets

Features:

- Attach to any equipment rack to secure cable
- Used for routing vertically
- Includes 12-24 mounting hardware
- Constructed of steel

PART NO.	DESCRIPTION	↓
OR-CB-93-6	0.75"H x 0.71"W x 6.00"D	
OR-CB-93-7	0.75"H x 0.71"W x 7.00"D	
OR-CB-93-8	0.75"H x 0.71"W x 8.00"D	

Gray finish. Add "B" to part number for black finish.

OR-RRJC-T



Runway Bracket Kit

Mount runway to equipment racks using the runway bracket kit. J-Bolts secure the brackets to the top angles of racks and create a solid connection between the rack and runway. The kit is easy to install and includes all required hardware.

PART NO.	DESCRIPTION	↓
OR-RRJC-T	Runway bracket kit	

Clear zinc plated.

STANDARD EIA FLOOR & WALL MOUNT RACKING SYSTEMS

2-Post Racks & Accessories

NOTE: Product dimensions are listed by width, height and depth unless specified otherwise.

OR-JP0612B



Junction Plate

Used for junctioning cable runway and equipment racks. Runway can be junctioned parallel or perpendicular to rack. Hardware included.

For racks with 3" uprights



PART NO.	DESCRIPTION
OR-JP0606B	7.50"L x 4.00"W x 0.25"D, for use with runway up to 6" wide
OR-JP0612B	12.50"L x 4.00"W x 0.25"D, for use with runway from 6"-12" wide
OR-JP1218B	18.50"L x 4.00"W x 0.25"D, for use with runway from 12"-18" wide
OR-JP1824B	24.50"L x 4.00"W x 0.25"D, for use with runway from 18"-24" wide

Black finish.

For racks with 6" uprights

PART NO.	DESCRIPTION
OR-JP0606-6TB	7.50"L x 7.00"W x 0.25"D, for use with runway up to 6" wide
OR-JP0612-6TB	12.50"L x 7.00"W x 0.25"D, for use with runway from 6"-12" wide
OR-JP1218-6TB	18.50"L x 7.00"W x 0.25"D, for use with runway from 12"-18" wide
OR-JP1824-6TB	24.50" x 7.00"W x 0.25"D, for use with runway from 18"-24" wide

Black finish.

OR-DC-19



Dust Cover

Features:

- Fully shields the self-support base opening to keep dust from accumulating
- Provides a clean installation
- Cover easily assembles without the use of tools
- Constructed of 16-gauge steel

For racks with 3" uprights



PART NO.	DESCRIPTION
OR-DC-19	0.75"H x 19.88"W x 5.30"D
OR-DC-23	0.75"H x 23.88"W x 5.30"D

Gray finish. Add "B" to part number for black finish.

For racks with 6" uprights

PART NO.	DESCRIPTION
OR-DC6-19B	0.75"H x 19.88"W x 8.30"D
OR-DC6-23B	0.75"H x 23.88"W x 8.30"D

Black finish.

OR-GR-19



Guard Rail

Features:

- Protects equipment from accidents
- One guard rail per order
- Sturdy steel construction
- Mounting hardware included

For racks with 3" uprights



PART NO.	DESCRIPTION
OR-GR-19	2.88"H x 19.81"W x 4.50"D
OR-GR-23	2.88"H x 23.81"W x 4.50"D

Gray finish. Add "B" to part number for black finish.

STANDARD EIA FLOOR & WALL MOUNT RACKING SYSTEMS

Wall Mount Racks & Brackets

NOTE: Product dimensions are listed by width, height and depth unless specified otherwise.

OR-19-21-T8D



Swing-EZ Wall Racks

The patented Swing-EZ wall rack arrives ready to square and keyholes mount in minutes. Reinforcement plates stabilize the frame to allow maximum load bearing capacity. Hub and LAN applications are easily accommodated without door deflection. Latch pins or bolts secure the door to the frame and remove to swing open smoothly from the left or right.

Features:

- Opens to allow easy access to terminations without disturbing terminations
- Both latch pins and bolts are included
- Hook and loop straps feed into slots for backside cable management
- Side panels fold flat for shipping, then unfold for easy on-site assembly
- 5/8", 5/8", 1/2" universal mounting hole pattern
- Mounting holes threaded for 12-24 hardware
- Includes cross-recessed 12-24 black panel mounting screws
- Made of steel
- Meets EIA-310 standards
- Listed to the UL 1863 Standard for Communications Circuit Accessories

PART NO.	DESCRIPTION
OR-19-21-T8D	21.00"H x 19.75"W x 8.00"D, rack spaces (1.75"): 11, load rating: 75 lbs
OR-19-35-T8D	35.00"H x 19.75"W x 8.00"D, rack spaces (1.75"): 19, load rating: 75 lbs
OR-19-21-T12D	21.00"H x 19.75"W x 12.00"D, rack spaces (1.75"): 11, load rating: 75 lbs
OR-19-35-T12D	35.00"H x 19.75"W x 12.00"D, rack spaces (1.75"): 19, load rating: 75 lbs
OR-19-48-T12D	48.00"H x 19.75"W x 12.00"D, rack spaces (1.75"): 26, load rating: 75 lbs
OR-19-21-T18D	21.00"H x 19.75"W x 18.00"D, rack spaces (1.75"): 11, load rating: 75 lbs
OR-19-35-T18D	35.00"H x 19.75"W x 18.00"D, rack spaces (1.75"): 19, load rating: 75 lbs
OR-19-48-T18D	48.00"H x 19.75"W x 18.00"D, rack spaces (1.75"): 26, load rating: 75 lbs
OR-19-21-T25D	21.00"H x 19.75"W x 25.00"D, rack spaces (1.75"): 11, load rating: 75 lbs
OR-19-35-T25D	35.00"H x 19.75"W x 25.00"D, rack spaces (1.75"): 19, load rating: 75 lbs
OR-19-48-T25D	48.00"H x 19.75"W x 25.00"D, rack spaces (1.75"): 26, load rating: 75 lbs

Gray finish. Add "B" to part number for black finish. Load rating based on using swing feature. Load increases when fixed.

OR-HFM-19-2



Cable Management Products for Swing-EZs

Ortronics cable management panels provide organized patch cables horizontally and vertically on Swing-EZ wall mount racks. Color is black.

Front and Rear Organizer

PART NO.	DESCRIPTION
OR-HFM-19-2	Front rings: vertical 1.75"W x 3.75"D, front rings: horizontal 1.75"H x 1.75"D, back rings: horizontal 2.50"H x 1.62"D, rack spaces (1.75"): 2

STANDARD EIA FLOOR & WALL MOUNT RACKING SYSTEMS

Wall Mount Racks & Brackets

NOTE: Product dimensions are listed by width, height and depth unless specified otherwise.

OR-19-35-T25DHYDT



Heavy Duty Swing-EZ Wall Racks

Patented heavy duty Swing-EZ wall racks are designed to mount heavier networking equipment in tight closets. A 12-gauge steel reinforcement pan attached to the bottom of the rack provides added strength. The pan works in conjunction with the stabilization plates and the self-squaring feature, allowing sturdy, dependable 150-pound equipment loads. The 25" depth allows plenty of room to open and close fully loaded with patch panels, hubs and routers.

Features:

- 150-lb load rating accommodates hubs and routers
- Swings open to the left or right for access to terminations
- Hook and loop straps included for backside cable management
- Self-squaring assembly
- Mounting holes threaded for 12-24 hardware
- Includes cross-recessed black panel mounting screws
- 5/8", 5/8", 1/2" universal mounting hole pattern
- Meets EIA-310 standards
- Made of steel
- Both latch pins and bolts included for easy rear access
- Listed to the UL 1863 standard for Communications Circuit Accessories

PART NO.	DESCRIPTION
OR-19-21-T25DHYDT	24.25"H x 19.75" W x 25.00"D, rack spaces: 11, load rating: 150 lbs
OR-19-35-T25DHYDT	38.25"H x 19.75" W x 25.00"D, rack spaces: 19, load rating: 150 lbs

Gray finish. Add "B" to part number for black finish.

STANDARD EIA FLOOR & WALL MOUNT RACKING SYSTEMS

Wall Mount Racks & Brackets

NOTE: Product dimensions are listed by width, height and depth unless specified otherwise.

Ortronics® wall mount racks and hinged wall mount brackets are designed for applications where space is critical. Their wall mount design increases closet wiring capacity while allowing rear access to patch panels and equipment.

OR-604045400



Wall Mount Racks

Ortronics Wall Mounted Racks offer the flexibility of an 18" (457 mm) deep wall mounted unit for mounting telecommunications and data equipment. They are available in three heights, with front swing gates and 19" #12-24 threaded EIA pattern. Black.

PART NO.	DESCRIPTION	
OR-604045400	20.25" x 18" x 26", 12 rack units, load rating: 75 lbs	↓
OR-604045450	20.25" x 18" x 38", 18 rack units, load rating: 100 lbs	
OR-604045451	20.25" x 18" x 50", 25 rack units, load rating: 125 lbs	

NOTE: Fully assembled, supplied with 10 self-adhesive saddles and 12 6" hook and loop straps.

OR-604045450



OR-604045451



STANDARD EIA FLOOR & WALL MOUNT RACKING SYSTEMS

Wall Mount Racks & Brackets

NOTE: Product dimensions are listed by width, height and depth unless specified otherwise.

OR-604004396



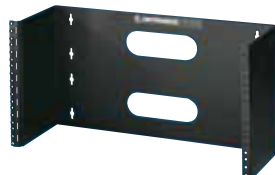
OR-604004301



OR-604004068



OR-604004645



Hinged Wall Mount Brackets

Ortronics® hinged wall mount brackets meet smaller system requirements and allow easy access to the rear of the panels. Holes in back allow for rear cable feed through. These brackets are available in four heights, with 19" #12-24 threaded EIA pattern. Fully assembled. Black.

PART NO.	DESCRIPTION
OR-604004396	19" x 6" x 3.5", 2 rack units
OR-604004301	19" x 6" x 5.25", 3 rack units
OR-604004068	19" x 6" x 7", 4 rack units
OR-604004645	19" x 6" x 10.5", 6 rack units

DATACAB CABINETS

DataCab Server Cabinets & Accessories

NOTE: Product dimensions are listed by width, height and depth unless specified otherwise.

NEW

The new Ortronics® DataCab server cabinets are built around a solid foundation. Every steel frame section is designed with a minimum of five bends that are interlocked and fully welded for exceptional strength and rigidity. The space saving, low profile door is constructed with extra reinforcing welded rails creating a thin, yet rugged design, not commonly associated with flush doors.

For maximum flexibility and ease of installing equipment, the EIA rails are mounted to three horizontal struts that provide infinite adjustability and the strength to hold up to 1600 lbs. Optional mounting and lacing bars offer additional flexibility and cable management support.

The cabinets are available in widths of 24" and 28" and depths of 40" and 46". Heights of 42 rack units (80.25") and 47 rack units (89") are available.

Features

- Full flat mesh front door with locking swing handle
- Split flat mesh rear doors with locking swing handle and two point latching
- Two side panels with latches and locks keyed alike to the doors
- Reversible single top panel with four 3" diameter cable entry holes and bushings
- Fully welded steel frame with leveling feet standard
- Two pairs of 19" EIA mounting rails with 3/8" square holes
- Rack unit numbers printed on all EIA rails
- EIA rails include integrated lacing slots for additional cable management
- Cage nuts #12-24 thread (package of 25)
- Panel mounting screws #12-24 (package of 25)
- 40" deep cabinet includes one single width PDU mounting bar
- 46" deep cabinet includes one double width PDU mounting bar



DataCab Server Cabinets

OR-DCC422846-00002



PART NO.	DESCRIPTION	
OR-DCC422440-00002	42U x 24"W x 40"D, height is 80.25", basic black	↓
OR-DCC422446-00002	42U x 24"W x 46"D, height is 80.25", basic black	
OR-DCC472440-00002	47U x 24"W x 40"D, height is 89", basic black	
OR-DCC472446-00002	47U x 24"W x 46"D, height is 89", basic black	
OR-DCC422840-00002	42U x 28"W x 40"D, height is 80.25", basic black	
OR-DCC422846-00002	42U x 28"W x 46"D, height is 80.25", basic black	
OR-DCC472840-00002	47U x 28"W x 40"D, height is 89", basic black	
OR-DCC472846-00002	47U x 28"W x 46"D, height is 89", basic black	

DataCab Accessories

PART NO.	DESCRIPTION
OR-DCCCASK-SW-3	Caster kit with corner brackets and 3" swivel casters
OR-DCC42VPMLS	Vertical PDU mount and lacing bar, single, 42U, with mounting hardware, basic black
OR-DCC47VPMLS	Vertical PDU mount and lacing bar, single, 47U, with mounting hardware, basic black
OR-DCC42VPMLD	Vertical PDU mount and lacing bar, double, 42U, with mounting hardware, basic black
OR-DCC47VPMLD	Vertical PDU mount and lacing bar, double, 47U, with mounting hardware, basic black

DATA CAB WALL MOUNT CABINETS

Wall Mount Cabinets & Accessories

NOTE: Product dimensions are listed by width, height and depth unless specified otherwise.

NEW

The new Ortronics® DataCab wall mount cabinets are perfect for both active equipment and passive zone cabling. The thin line front door construction offers more room in the center section to provide easy access to the equipment.

The heavy duty construction of the cabinet minimizes sagging under heavy loads. The hinge side placement of the rear section mounting holes provides additional support when the center section is open for terminations.

The sides of the cabinet are vented for passive cooling of the active equipment, and the optional 50cfm fan is 50% quieter than the fans of most other leading cabinets.

Features

- Choice of solid or plexiglass door
- Locking center section swings out to provide easy access
- Door and center section are keyed alike
- Includes one pair of fully adjustable 12-24 EIA mounting rails
- Heavy duty welded steel construction
- Vented sides for passive cooling of active equipment
- Optional 50cfm cooling fans are available to further protect active equipment



OR-DCW122424S-B



DataCab Wall Mount Cabinets

The DataCab wall mount cabinet comes standard with four removable cable knock-out panels on the rear section. Each section contains one knock-out that can be 1-3/8" or 2" diameter and two knockouts that can be 7/8" or 1-1/8" diameter.

PART NO.	DESCRIPTION	WEIGHT CAPACITY
OR-DCW122424S-B	12U x 24"W x 24"D, solid door, height is 23.50", basic black	125 lbs
OR-DCW122424P-B	12U x 24"W x 24"D, plexiglass door, height is 23.50", basic black	125 lbs
OR-DCW192424S-B	19U x 24"W x 24"D, solid door, height is 35.75", basic black	150 lbs
OR-DCW192424P-B	19U x 24"W x 24"D, plexiglass door, height is 35.75", basic black	150 lbs

DataCab Accessories

PART NO.	DESCRIPTION
OR-MMCFAN-4-50	Fan kit, 4", 50cfm with finger guard and 2' power cord
OR-MMWBPk	Brush plate kit
OR-DCW12M12-B	12U mounting rail, 12-24, one-pair
OR-DCW19M12-B	19U mounting rail, 12-24, one-pair

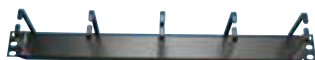
HORIZONTAL CABLE MANAGEMENT, SHELVES & ACCESSORIES

Cable Management Panels

NOTE: Product dimensions are listed by width, height and depth unless specified otherwise.

Complete cable management maximizes system performance. Legrand | Ortronics has the largest selection of horizontal cable managers in the industry. This wide array of panel styles will meet all cable management requirements.

OR-60400131



OR-60400057



OR-808045590



OR-808004759



OR-808004867



OR-808004818



OR-808044855



OR-808045768



Cable Management Panels

Ortronics® cable management panels provide organized movement of patch cables horizontally and vertically on 19" EIA distribution racks. Black.

PART NO.	DESCRIPTION	
OR-60400131	Five horizontal distribution rings, 1.7"H x 3.5"D, 1 rack unit	
OR-60400057	Five horizontal distribution rings, 3"H x 4"D, 2 rack units	
OR-808045590	Five horizontal polycarbonate plastic distribution rings, 1.7"H x 6"D, 1 rack unit	
OR-808004759	Five horizontal plastic distribution rings, 1.7"H x 2.70"D, 1 rack unit	
OR-808004867	Five horizontal plastic distribution rings, 3.95"H x 2.4"D, 2 rack units	
OR-808004818	Five horizontal plastic distribution rings, 3.95"H x 4.8"D, 2 rack units	
OR-808044855	Four horizontal, four vertical distribution rings, 2"H x 4"D, 24 routing clips, .10"W x 2.63"D, 2 rack units	
OR-808045768	Five horizontal polycarbonate plastic distribution rings, 1.7"H x 3"D, 1 rack unit	

NOTE: Includes #12-24 mounting hardware.